

2024



EARLY BIRD SPECIALS

MUKAMBI SAFARI LODGE
FIG TREE BUSH CAMP
BUSANGA PLAINS CAMP

RATES VALID UNTIL 31 MARCH 2024

Book before the 31st March 2024 and pay 50% (**within 14 days**) to get **FREE** Road Transfers, Flights, National Park Fees & Bed Levies included!



FULL KAFUE EXPERIENCE

8 DAYS, 7 NIGHTS

2 nights Mukambi, 2 nights Fig Tree,
3 nights Busanga; 1 July - 31 October

- **USD 4350 pp**
- This rate includes all road transfers, accommodation, activities, meals, drinks, park entry fees, and bed night levies.
- Road transfers can be upgraded to flights for an additional USD 500 pp each way (single supplement applies; see Booking Information)
- Minimum age: 12 years

Note: Normal price USD 5285 pp (save USD 935)

Extra nights can be added to this package and include park fees & bed levies;

- USD 350 pp at Mukambi Lodge / Fig Tree
- USD 550 pp at Busanga Plains Camp





BUSH CAMP PACKAGE

6 DAYS, 5 NIGHTS

2 nights Fig Tree, 3 nights Busanga;
1 July - 31 October

- **USD 4050 pp**
- This rate includes one road transfer, one flight, accommodation, activities, meals, drinks, park entry fees, and bed night levies.
- This package includes a road transfer in/out and a flight in/out of Kafue National Park. The road transfer can be upgraded to a flight for an additional USD 500 pp (single supplement applies; see Booking Information)
- Minimum age: 12 years

Note: Normal price USD 4555 pp (save USD 505)

Extra nights can be added to this package and include park fees and bed levies;

- USD 350 pp at Fig Tree Bush Camp
- USD 550 pp at Busanga Plains Camp





MUKAMBI SAFARI LODGE & BUSANGA PLAINS CAMP

6 DAYS, 5 NIGHTS

2 nights Mukambi, 3 nights Busanga;
1 July - 31 October



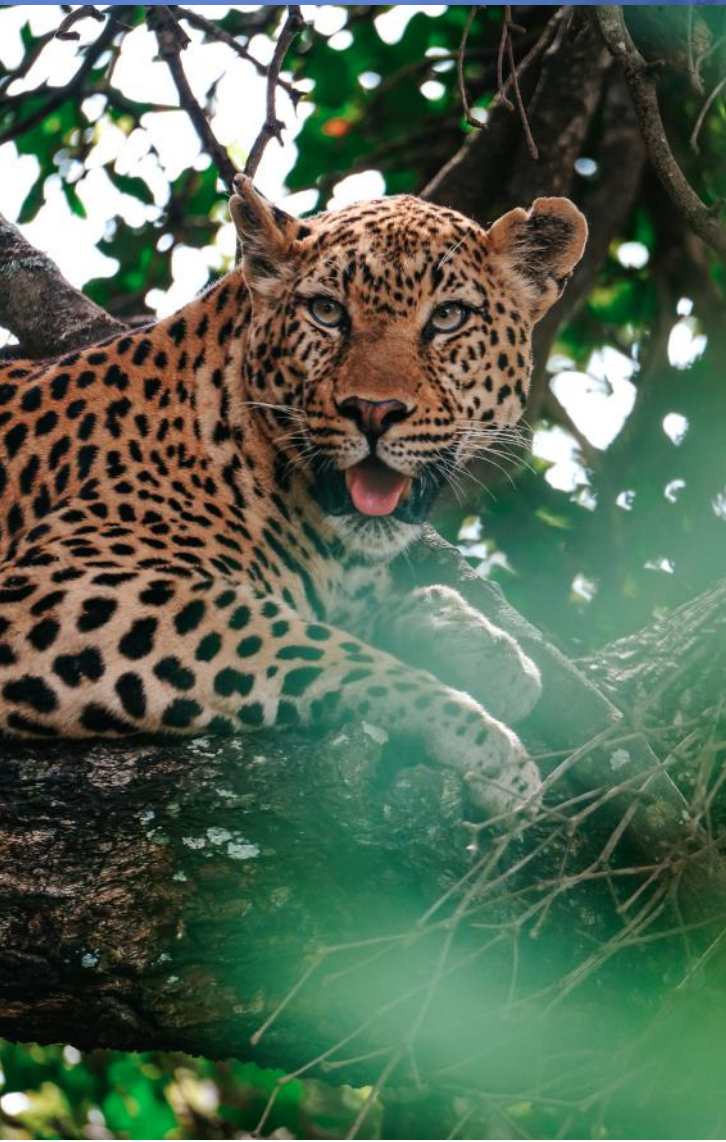
- **USD 3400 pp**
- This rate includes all road transfers, accommodation, activities, meals, drinks, park entry fees, and bed night levies.
- Road transfers can be upgraded to flights for an additional USD 500 pp each way (single supplement applies; see Booking Information)
- Minimum age: 12 years

Note: Normal price USD 4035 pp (save USD 635)

Extra nights can be added to this package and include park fees and bed levies;

- USD 350 pp at Mukambi Lodge
- USD 550 pp at Busanga Plains Camp





MUKAMBI SAFARI LODGE & FIG TREE BUSH CAMP

6 DAYS, 5 NIGHTS

2 nights Mukambi, 3 nights Fig Tree;

Special :

- **USD 2125 pp (Low Season)**

(Low season 1 May - June 30 & 1 Nov - 30 Nov)

Note: Normal price USD 2770 pp (save USD 645)

- **USD 2550 pp (High Season)**

(high season 1 July - 31 Oct)

- This rate includes all road transfers, accommodation, activities, meals, drinks, park entry fees, and bed night levies.
- Road transfers can be upgraded to flights for an additional USD 500 pp each way (single supplement applies; see Booking Information)
- Minimum age: 12 years old

Note: Normal price USD 3295 pp (save USD 745)

Extra nights can be added to this package and include park fees & bed levies;

- USD 350 pp





BOOKING INFORMATION

- Reservations should be booked and paid with a 50% deposit within 14 days of making the reservation to secure the booking.
- All packages with road transfers can have their road transfer upgraded to a flight for an additional USD 500 per person each way (minimum 2 guests to qualify). Single travelers upgrade at a rate of USD 1000 each way.
- All rates are inclusive of VAT and quoted in USD per person per night sharing.
- A single supplement of 30% applies for single occupancy.
- Master/Visa/Amex welcome (3% handling fee).
- Provisional bookings will be held for 14 days only and will need to be confirmed; failure to confirm the booking will result in it being automatically released unless otherwise agreed. 50% balance to be paid 30 days before travel.
- Once a guest advises they wish to go ahead with the booking, we will continue to hold until the stipulated payment date.
- The transfer between Mukambi and Busanga is by open or closed transfer vehicle and takes around 4 hours, including a tea/coffee break. For Fig Tree, the drive is 1hr 30 minutes to camp. The transfer for both bush camps is through the National Park.

- Included flights are between Lusaka - Chunga (vice versa) and Lusaka - Busanga (vice versa) only. Guests can add on additional routes which will be charged at an additional fee depending on the routing.
- the add on nights are inclusive of the same offering as the package rate i.e. Accommodation, meals, beverages, activities, park fees and bed night levies.

CANCELLATION POLICY

In the event of notification of cancellation, the following cancellation fee shall apply on the full booking:

Cancellation 60 days or more, prior to arrival: 25% cancellation fee

Cancellation 30 – 60 days, prior to arrival: 50% cancellation fee

Cancellation 30 days or less, prior to arrival: 100% cancellation fee

- Full payment required 30 days before the guest's travel dates.
- Please make sure you have adequate travel insurance to cover you, just in case something unexpected happens. We also recommend that guests have full medical evacuation insurance cover as we are, by choice, in a remote part of a remote country and the nearest local hospital is two hours away with limited facilities.